

FALL FESTIVAL TECHNICAL CATEGORY

BASIC INFORMATION FOR A/B/C DIVISIONS

I. COACH'S RESPONSIBILITY

It is the **coach's responsibility** to make sure:

- A. All **rules** are followed
- B. All **paperwork** is complete
This means all **requisite forms** are filled out, AND students have prepared their **notebook** according to directions, with everything in the right order.
NOTE: ONE notebook is required. Students have the option of bringing additional copies of the notebook for the judges, if they wish.
- C. The **costs of materials** have been determined and kept **within the designated limit**
- D. The value of all **donated/found material** has been estimated at the current fair market value and is included within the designated limit
- E. Creators and models are able to explain the **reasons for their choices**
- F. **Receipts** are available if judges question the amount spent

II. JUDGING

- A. Each entry will be judged on the basis of **design, workmanship, and presentation**.
That said, entrants must recognize that all entries will primarily be judged as a THEATRICAL creation.
- B. **Research** is VERY important and entrants **MUST come prepared** to answer questions about the **choices and time period** of their design.
- C. Presentation of the winners will take place during the awards ceremony.
- D. Judges will be asked to share their thoughts on share sheets for each entrant.

III. RE-USE OF A WINNING ENTRY

- A. A winning entry may **not** be entered in any subsequent competition (Honorable Mention included).

IV. RECOGNITION

- A. All entries receive one (1) sweepstakes point.
- B. All entrants receive finalist ribbon.
- C. First through Fifth and Honorable Mentions may be awarded in each category.

NOTE: Failure to adhere to the directions will exclude students from a plaque or trophy, but entry will be evaluated by judges for critique sheets.

FALL FESTIVAL TECHNICAL CATEGORY

SETS/LIGHTS – DIVISION A

- A. Category is “**Story Theatre**” but **instructor must select ONE play** to use for **all tech entries** for each festival. May select from *Story Theatre I* or *Story Theatre II*.
- B. Students design **ONE (1) set**, at a **scale of 1/2 inch = 1 foot**.
 - 1. Stage description and dimensions are the designer’s choice (and must be included and adhered to throughout the designs) but they must not exceed the DTASC standards of 18’ high, 36’ wide, 30’ deep.
 - 2. **Art work** must be done on **white** paper; artist rendering may be in **color**.
- C. There is **NO lighting component for Division A**, in spite of the category’s name.
- D. **Six (6)** presenters to a team (maximum).
Students may only participate on one presentation panel.
MANDATORY: At least one member from the design team MUST be on the presentation panel.
- E. Any currently enrolled student at the school can participate in the creation and execution of the design.
- F. **MANDATORY: Prepared oral presentation** will not exceed eight (8) minutes in length. All presentations must include **explanation of concept, choices, and materials**. Presenters must have a **thorough knowledge of concept and materials** as the judges will be allotted an approximate three (3) minute question and answer period following the presentation.
- G. **MANDATORY: Notebook** with the following items in this order:
 - 1. **Title page with School Code, “A” Festival, Title & Author of Play**
 - 2. **Signed form from coach** declaring project was all student designed and produced, and all costs were kept within designated limits.
SEE PAGE E3–20. Copy for EACH entry.
 - 3. **Concept Paper**. See attached for directions. 1–2 pages max for Concept Paper.
 - 4. **Research** — to include actual research, plus sketches, problems solved, unused ideas, etc.

See page E3–17 for specific details about the Notebook and Concept Paper.

FALL FESTIVAL TECHNICAL CATEGORY

SETS/LIGHTS – DIVISION B

- A. Entries **MUST** be from the **play or genre designated** by DTASC. Category for 2008 is “**Story Theatre**” but **instructor must select ONE play** to use **for all tech entries** for each festival. May select from *Story Theatre I* or *Story Theatre II*.
- B. **TWO (2) sets required**, at a **scale of 1/2 inch = 1 foot**.
These do not have to be two separate, fully built sets, but could be one set with decorations or other elements moved or added to show two separate scenes from a play.
Please note, a bare stage is not considered a set.
Stage description and dimensions are the designer’s choice (and must be included and adhered to throughout the designs) but they must not exceed the DTASC standards of 18’ high, 36’ wide, 30’ deep.
- C. **MANDATORY: A simple Overhead Ground Plan** for each set model.
- D. **Lights** are required for **ONE (1) of the two sets**.
MANDATORY: An overhead chart representing exact scale of sets (either 1/4” or 1/2” scale), **location of lighting instruments, location of stage area lit by each instrument, type of instrument, and color medium**.
Types of instruments — only the following may be included (not required to use all): 24 6” Ellipsoidals, 24 6” Fresnels (pronounced “fer-NELS”), 2 beam projectors, 4 strip lights, 1 spotlight, 6 gel scrollers, 2 image projectors, follow spots, and any practical lighting such as lamps or streetlights.
Set up: 2 catwalks, 3 electrics, 2 trees
Keep it simple!
- E. **Six (6)** presenters to a team (maximum).
Students may only participate on one presentation panel.
MANDATORY: At least one member from the design team MUST be on the presentation panel.
- F. Any currently enrolled student at the school can participate in the creation and execution of the design.
- G. Technology (optional) — For the purposes of presentation, the use of latest theatre technology is encouraged. Entrant must bring own equipment. One television, a VCR, and a regular overhead projector will be available. Darkness of the room in which presentation takes place cannot be guaranteed.
- H. **MANDATORY: Prepared oral presentation** will not exceed eight (8) minutes in length. All presentations must include **explanation of concept, choices, and materials**. Presenters must have a **thorough knowledge of concept and materials** as the judges

continued

B DIVISION SETS/LIGHTS, CONTINUED

will be allotted an approximate three (3) minute question and answer period following the presentation.

- I. **MANDATORY: Notebook** with the following items in this order:
 1. **Title page with School Code, “B” Festival, Title & Author of Play**
 2. **Signed form from coach** declaring project was all student designed and produced, and all costs were kept within designated limits.
SEE PAGE E3–20. Copy for EACH entry.
 3. **Concept Paper.** See attached for directions. 1–2 pages max for Concept Paper.
 4. **Research** — to include actual research, plus sketches, problems solved, unused ideas, etc.

See page E3–17 for specific details about the Notebook and Concept Paper.

FALL FESTIVAL TECHNICAL CATEGORY

SETS/LIGHTS – DIVISION C

A. Entries **MUST** be from the **play or genre designated** by DTASC. For 2008, the selection is “**Plays of Tennessee Williams.**” Select **ONE** play to use for all tech entries.

B. **THREE (3) sets required, at 1/2” scale.**

Stage description and dimensions are the designer’s choice (and must be included and adhered to throughout the designs) but they must not exceed the DTASC standards of 18’ high, 36’ wide, 30’ deep.

1. **Set Design**

- a. Bring architectural **overhead** ground plans, **1/4” or 1/2” scale MANDATORY.**
- b. White paper only, with artist rendering of set in color—may be included.

2. **Set Model**

- a. **1/2” scale MANDATORY**
- b. Any suitable material may be used.
- c. Maximum cost is \$75, but this does **NOT** include the “Black Box” Theatre model used for sets.

C. **Lights**

1. **Simple, 1/4” scale overhead ground plans** required for **EACH of the 3 sets.**

MANDATORY: Need light design for ALL 3 designed sets.

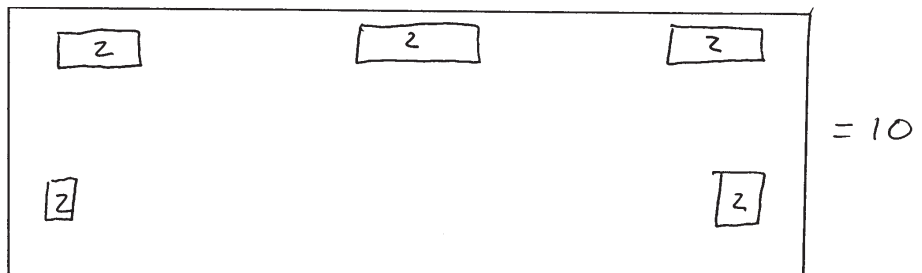
2. Light design **MUST** include **instrument schedule:** Type, hanging location, beam position (Numbers remain as currently listed. Individual instrument wattage left up to each designer, as long as it is workable for actual instruments. Wattage must be part of light design).

3. Light design **MUST** include **color medium schedule.**

4. Light design **MUST** include **circuiting chart.**

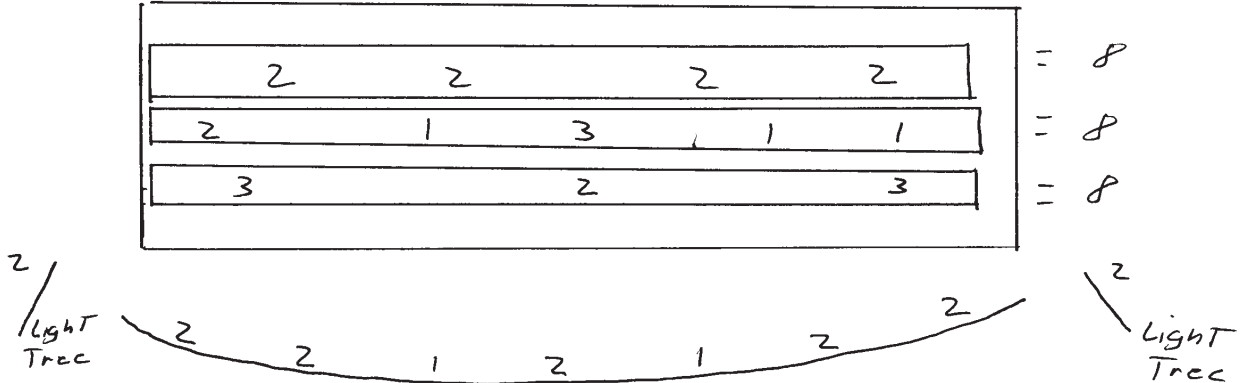
5. To allow for easy judging for this addition to the category, the following requirements are **recommended:**

- 50 circuits available
- Each circuit is 1,500 watts
- 3 electrics remain as is, with each one containing 8 circuits. 24 total circuits for the electrics
- Ante-Proscaenium (APs) will contain 16 circuits
- There will be 10 floor pockets.
- The floor pockets will be located in the following positions and cannot be moved:



C DIVISION SETS/LIGHTS, CONTINUED

The electricians and AP will allow for repositioning of circuits to accommodate individual designs. What follows is an **EXAMPLE**:



RATIONALE

- 1,500 watts per Circuit will allow for ample use of “Specials,” as well as allow for a much more practical light design.
- 1,500 watts per circuit will allow for 250 watt strip lamps on a standard 3 lamp per strip, ganged together with a second strip light.
- Adding floor pockets will make “Practical” lights an actual part of light designs for the first time.
- This component has always been missing from the category. Adding it allows for a natural progression from “A” Festival to “B” on to “C.”

IF A THRUST OR ARENA STAGE IS SELECTED, THIS CIRCUITING CHART IS STILL USED.

6. Other lighting requirements

- Specified number and type of lighting instruments allowed in design (not necessary to use all of them):
Set up: 2 catwalks, 3 electricians, 2 trees
- Instruments: 24 6” Ellipsoidals, 24 6” Fresnels (pronounced “fer-NELS”), 2 beam projectors, 4 strip lights, 1 spotlight, 6 gel scrollers, 2 image projectors
- May use any colors
- Sample gel colors may be included in presentation

NOTE: No added instruments are allowed to connect to the accessories.

D. **Four (4)** presenters to a team (maximum).

Students may only participate on one presentation panel.

MANDATORY: At least one member from the design team **MUST** be on the presentation panel.

E. Any currently enrolled student at the school can participate in the creation and execution of the design.

continued

C DIVISION SETS/LIGHTS, CONTINUED

- F. Technology (optional) — For the purposes of presentation, the use of latest theatre technology is encouraged. Entrant must bring own equipment. One television, a VCR, and a regular overhead projector will be available. Darkness of the room in which presentation takes place cannot be guaranteed.
- G. MANDATORY: Prepared **oral presentation** will not exceed eight (8) minutes in length. All presentations must include **explanation of concept, choices, and materials**. Presenters must have a **thorough knowledge of concept and materials** as the judges will be allotted an approximate three (3) minute question and answer period following the presentation.
- H. MANDATORY: **Notebook** with the following items in this order:
1. **Title page with School Code, “C” Festival, Title & Author of Play**
 2. **Signed form from coach** declaring project was all student designed and produced, and all costs were kept within designated limits.
SEE PAGE E3–20. Copy for EACH entry.
 3. **Concept Paper**. See attached for directions. 1–2 pages max for Concept Paper.
 4. **Research** — to include actual research, plus sketches, problems solved, unused ideas, etc.

See page E3–17 for specific details about the Notebook and Concept Paper.

FALL FESTIVAL TECHNICAL CATEGORY

COSTUMES/MAKEUP – DIVISION A

- A. Category is “**Story Theatre**” but **instructor must select ONE play** to use for **all tech entries** for each festival. May select from *Story Theatre I* or *Story Theatre II*.
- B. **THREE TO FOUR (3–4) costume renderings** are required, as follows:
1. Students **MAY construct one or two fully realized costumes** (constructed or gathered, not rented), following all appropriate guidelines addressed in the Shakespeare Costume category.
 2. **MANDATORY: Color renderings of costumes with make-up**, on **white** paper.
 3. **MANDATORY: One rendering must be done for EACH fully realized costume.**
 4. **MANDATORY: Two renderings are to be of costumes not fully realized.** This will result in four renderings if a pair of costumes are fully realized, three if only one costume is fully realized.
 5. **MANDATORY: If NO costumes are fully realized, FOUR** costume/make-up renderings are required.
 6. **Character** must be identified on front of each design, both costume and make-up.
 7. If costume is not for the entire play, **act and scene** must be identified, in writing, on front of each costume and make-up design.
 8. **MANDATORY: Legend indicates types of fabric** intended; **swatches** must be provided for each design.
 9. Legend indicates **types of makeup** intended.
- C. A maximum of **\$75.00 total** may be spent for the fully realized costume(s).
- D. **Six (6)** presenters to a team (maximum), including models.
Students may only participate on one presentation panel.
MANDATORY: At least one member from the design team MUST be on the presentation panel.
- E. Any currently enrolled student at the school can participate in the creation and execution of the design.
- F. **MANDATORY: Prepared oral presentation** will not exceed eight (8) minutes in length. All presentations must include **explanation of concept, choices, and materials**. Presenters must have a **thorough knowledge of concept and materials** as the judges will be allotted an approximate three (3) minute question and answer period following the presentation.
- G. **MANDATORY: Notebook** with the following items in this order:
1. **Title page with School Code, “A” Festival, Title & Author of Play**
 2. **Signed form from coach** declaring project was all student designed and produced, and all costs were kept within designated limits.
SEE PAGE E3–21. Copy for EACH entry.
 3. **Concept Paper**. See attached for directions. 1–2 pages max for Concept Paper.
 4. **Research** — to include actual research, plus sketches, problems solved, unused ideas, etc.

See page E3–18 for specific details about the Notebook and Concept Paper.

FALL FESTIVAL TECHNICAL CATEGORY

COSTUMES/MAKEUP – DIVISION B

- A. Entries **MUST** be from the **play or genre designated** by DTASC. Category for 2008 is “**Story Theatre**” but **instructor must select ONE play** to use **for all tech entries** for each festival. May select from *Story Theatre I* or *Story Theatre II*.
- B. **ONE (1) fully realized costume AND 3–4 costume renderings** are required, as follows:
1. Students **MUST construct one fully realized costume** (constructed or gathered, not rented), following all appropriate guidelines addressed in the Shakespeare Costume category. They **MAY** construct a pair of fully realized costumes.
 2. **MANDATORY: Color renderings of costumes with make-up**, on **white** paper.
 3. **MANDATORY: One rendering must be done for EACH fully realized costume.**
 4. **MANDATORY: Two renderings are to be of costumes not fully realized.** This will result in four renderings if a pair of costumes are fully realized, three if only one costume is fully realized.
 5. **Character** must be identified on front of each design, both costume and make-up.
 6. If costume is not for the entire play, **act and scene** must be identified, in writing, on front of each costume and make-up design.
 7. **MANDATORY: Legend indicates types of fabric intended; swatches** must be provided for each design.
 8. Legend indicates **types of makeup** intended
- C. A maximum of **\$75.00 total** may be spent for the fully realized costume(s).
- D. **Six (6)** presenters to a team (maximum), including models.
Students may only participate on one presentation panel.
MANDATORY: At least one member from the design team MUST be on the presentation panel.
- E. Any currently enrolled student at the school can participate in the creation and execution of the design.
- F. **MANDATORY: Prepared oral presentation** will not exceed eight (8) minutes in length. All presentations must include explanation of **concept, choices, and materials**. Presenters must have a **thorough knowledge of concept and materials** as the judges will be allotted an approximate three (3) minute question and answer period following the presentation.
- G. **MANDATORY: Notebook** with the following items in this order:
1. **Title page with School Code, “A” Festival, Title & Author of Play**
 2. **Signed form from coach** declaring project was all student designed and produced, and all costs were kept within designated limits.
SEE PAGE E3–21. Copy for EACH entry.
 3. **Concept Paper**. See attached for directions. 1–2 pages max for Concept Paper.
 4. **Research** — to include actual research, plus sketches, problems solved, unused ideas, etc.

See page E3–18 for specific details about the Notebook and Concept Paper.

FALL FESTIVAL TECHNICAL CATEGORY

COSTUMES/MAKEUP – DIVISION C

- A. Entries **MUST** be from the **play or genre designated** by DTASC. For 2008, the selection is “**Plays of Tennessee Williams.**” Select ONE play to use for all tech entries.
- B. **FIVE (5) costume renderings** are required, as follows:
1. Students **MUST construct one or two fully realized costumes** (constructed or gathered, not rented), following all appropriate guidelines addressed in the Shakespeare Costume category.
 2. **MANDATORY: Color renderings of costumes with make-up**, on **white** paper.
 3. **MANDATORY: One rendering must be done for EACH fully realized costume.**
 4. **MANDATORY: The remaining renderings are to be of costumes not fully realized.**
 5. **Character** must be identified on front of each design, both costume and make-up.
 6. If costume is not for the entire play, **act and scene** must be identified, in writing, on front of each costume and make-up design.
 7. **MANDATORY: Legend indicates types of fabric** intended; **swatches** must be provided for each design.
 8. Legend indicates **types of makeup** intended
- C. A maximum of **\$75.00 total** may be spent for the fully realized costume(s).
- D. **Four (4)** presenters to a team (maximum), including models.
Students may only participate on one presentation panel.
MANDATORY: At least one member from the design team MUST be on the presentation panel.
- E. Any currently enrolled student at the school can participate in the creation and execution of the design.
- F. **MANDATORY: Prepared oral presentation** will not exceed eight (8) minutes in length. All presentations must include **explanation of concept, choices, and materials**. Presenters must have a **thorough knowledge of concept and materials** as the judges will be allotted an approximate three (3) minute question and answer period following the presentation.
- G. **MANDATORY: Notebook** with the following items in this order:
1. **Title page with School Code, “C” Festival, Title & Author of Play**
 2. **Signed form from coach** declaring project was all student designed and produced, and all costs were kept within designated limits.
SEE PAGE E3–21. Copy for EACH entry.
 3. **Concept Paper.** See attached for directions. 1–2 pages max for Concept Paper.
 4. **Research** — to include actual research, plus sketches, problems solved, unused ideas, etc.

See page E3–18 for specific details about the Notebook and Concept Paper.

FALL FESTIVAL TECHNICAL CATEGORY

GRAPHICS/PUBLICITY – DIVISION A

- A. Category is “**Story Theatre**” but **instructor must select ONE play** to use for **all tech entries** for each festival. May select from *Story Theatre I* or *Story Theatre II*.
- B. **MUST** include the following components:
1. **MANDATORY: Four (4)-page program.** (May not leave one page blank for “Autographs.”) Any size page is allowed. Each side of a page counts as 1 page. A sheet of paper folded in half equals 4 pages.
 2. **MANDATORY: One poster or flyer** of any size.
 3. **MANDATORY: A theoretical publicity budget of \$250.00.** This does NOT include the costs of printing the program or the poster/flyer. Use this money for **OTHER** publicity such as t-shirt design, ticket design, etc.
- C. **Six (6)** presenters to a team (maximum).
Students may only participate on one presentation panel.
MANDATORY: At least one member from the design team MUST be on the presentation panel.
- D. Any currently enrolled student at the school can participate in the creation and execution of the design.
- E. **MANDATORY: Prepared oral presentation** will not exceed eight (8) minutes in length. All presentations must include **explanation of concept, choices, and materials**. Presenters must have a **thorough knowledge of concept and materials** as the judges will be allotted an approximate three (3) minute question and answer period following the presentation.
- F. **MANDATORY: Notebook** with the following items in this order:
1. **Title page with School Code, “A” Festival, Title & Author of Play**
 2. **Signed form from coach** declaring project was all student designed and produced, and all costs were kept within designated limits.
SEE PAGE E3–22. Copy for EACH entry.
 3. **Concept Paper.** See attached for directions. 1–2 pages max for Concept Paper.
 4. **Research** — to include actual research, plus sketches, problems solved, unused ideas, etc.

See page E3–19 for specific details about the Notebook and Concept Paper.

FALL FESTIVAL TECHNICAL CATEGORY

GRAPHICS/PUBLICITY – DIVISION B

- A. Entries **MUST** be from the **play or genre designated** by DTASC. Category for 2008 is “**Story Theatre**” but **instructor must select ONE play** to use **for all tech entries** for each festival. May select from *Story Theatre I* or *Story Theatre II*.
- B. **MUST** include the following components:
1. **MANDATORY: Four (4)-page program.** (May not leave one page blank for “Autographs.”) Any size page is allowed. Each side of a page counts as 1 page. A sheet of paper folded in half equals 4 pages.
 2. **MANDATORY: One poster or flyer** of any size.
 3. **MANDATORY: A theoretical publicity budget of \$500.00.** This does NOT include the costs of printing the program or the poster/flyer. Use this money for OTHER publicity such as t-shirt design, ticket design, etc.
- C. **Six (6)** presenters to a team (maximum).
Students may only participate on one presentation panel.
MANDATORY: At least one member from the design team MUST be on the presentation panel.
- D. Any currently enrolled student at the school can participate in the creation and execution of the design.
- E. **MANDATORY: Prepared oral presentation** will not exceed eight (8) minutes in length. All presentations must include **explanation of concept, choices, and materials**. Presenters must have a **thorough knowledge of concept and materials** as the judges will be allotted an approximate three (3) minute question and answer period following the presentation.
- F. **MANDATORY: Notebook** with the following items in this order:
1. **Title page with School Code, “B” Festival, Title & Author of Play**
 2. **Signed form from coach** declaring project was all student designed and produced, and all costs were kept within designated limits.
SEE PAGE E3–22. Copy for EACH entry.
 3. **Concept Paper.** See attached for directions. 1–2 pages max for Concept Paper.
 4. **Research** — to include actual research, plus sketches, problems solved, unused ideas, etc.

See page E3–19 for specific details about the Notebook and Concept Paper.

FALL FESTIVAL TECHNICAL CATEGORY

GRAPHICS/PUBLICITY – DIVISION C

- A. Entries **MUST** be from the **play or genre designated** by DTASC. For 2008, the selection is **“Plays of Tennessee Williams.”** Select **ONE** play to use for all tech entries.
- B. **MUST** include the following components:
1. **MANDATORY: Four to eight (4–8) page program.** (May not leave one page blank for “Autographs.”) Any size page is allowed. Each side of a page counts as 1 page. A sheet of paper folded in half equals 4 pages.
 2. **MANDATORY: One poster or flyer** of any size.
 3. **MANDATORY: A theoretical publicity budget of \$1,000.00.** This does **NOT** include the costs of printing the program or the poster/flyer. Use this money for **OTHER** publicity such as t-shirt design, ticket design, etc. Include a **list of publicity and a mock timeline** of when those events take place.
- C. **Four (4)** presenters to a team (maximum).
Students may only participate on one presentation panel.
MANDATORY: At least **one member from the design team MUST** be on the presentation panel.
- D. Any currently enrolled student at the school can participate in the creation and execution of the design.
- E. **MANDATORY:** Prepared **oral presentation** will not exceed eight (8) minutes in length. All presentations must include **explanation of concept, choices, and materials.** Presenters must have a **thorough knowledge of concept and materials** as the judges will be allotted an approximate three (3) minute question and answer period following the presentation.
- F. **MANDATORY: Notebook** with the following items in this order:
1. **Title page with School Code, “C” Festival, Title & Author of Play**
 2. **Signed form from coach** declaring project was all student designed and produced, and all costs were kept within designated limits.
SEE PAGE E3–22. Copy for EACH entry.
 3. **Concept Paper.** See attached for directions. 1–2 pages max for Concept Paper.
 4. **Research** — to include actual research, plus sketches, problems solved, unused ideas, etc.

See page E3–19 for specific details about the Notebook and Concept Paper.

SET/LIGHTS:

A GUIDE TO THE

NOTEBOOK AND CONCEPT PAPER

I. TITLE PAGE

1. School Code
2. A, B, or C Division Festival
3. Title and author of play

II. TEACHER'S SIGNATURE SHEET (see E3–20)

III. CONCEPT PAPER (1–2 pages maximum)

Please write in short, simple sentences.

A. Essential Play Information

1. Title (again)
2. Author (again)
3. Genre (tragedy/comedy, etc.)
4. Historical period/cultural context
5. Settings and time passage
6. Style (romantic, etc.)

B. Interpretation of Play

1. Very brief plot summary — key conflict/resolution
2. Significant roles played by key characters
3. Dominant theme or message
4. Playwright's intent — How play reflects author's purpose

C. Designers' intent — Values of the play/playwright that the designers are committed to expressing through their designs

1. Mood, emotional tone, meanings
2. Stylistic and/or practical design goals

IV. RESEARCH

The following are **recommendations** of things to include in this section. Include as few or as many as are appropriate for each entry.

- A. State specific design choices and explain in more detail how they help to communicate the practical needs, as well as meanings, emotions, and stylistic goals stated in the introduction.
- B. Drawings/sketches/renderings/models/plots (Explain in more detail how they support the play based on number and sequence of settings, time passage, script requirements, and authentic research)
- C. Practical choices — cost, time, materials, ease of use, ease in staging
- D. Artistic choices — color, texture, line, shape, composition, silhouette, balance, terminal accents, special effects
- E. Artistic license — unique choices based on an artistic vision (visual metaphors)
- F. Special design problems faced and how you resolved them
- G. Changes that you would make a second time and why
- H. Your greatest successes/personal rewards and why

CA Theatre Arts Standard
3.2 - Advanced
Students design theatre pieces
in specific theatrical styles
including classics by such
playwrights as Shakespeare.

COSTUMES/MAKEUP:

A GUIDE TO THE

NOTEBOOK AND CONCEPT PAPER

I. TITLE PAGE

1. School Code
2. A, B, or C Division Festival
3. Title and author of play

II. TEACHER'S SIGNATURE SHEET (see E3–21)

III. CONCEPT PAPER (1–2 pages maximum)

Please write in short, simple sentences.

A. Essential Play Information

1. Title (again)
2. Author (again)
3. Genre (tragedy/comedy, etc.)
4. Historical period/cultural context
5. Settings and time passage
6. Style (romantic, etc.)

B. Interpretation of Play

1. Very brief plot summary — key conflict/resolution
2. Significant roles played by key characters
3. Dominant theme or message
4. Playwright's intent — How play reflects author's purpose

C. Designers' intent — Values of the play/playwright that the designers are committed to expressing through their designs

1. Mood, emotional tone, meanings
2. Stylistic and/or practical design goals

IV. RESEARCH

The following are **recommendations** of things to include in this section. Include as few or as many as are appropriate for each entry.

- A. State specific design choices and explain in more detail how they help to communicate the practical needs, as well as meanings, emotions, and stylistic goals stated in the introduction.
- B. Drawings/sketches/renderings/models/plots (Explain in more detail how they support the play based on the characters, their actions, the time period, script requirements, and authentic research)
- C. Practical choices — cost, time, materials, ease of use, ease in staging
- D. Artistic choices — color, texture, line, shape, composition, silhouette, balance, terminal accents, special effects
- E. Artistic license — unique choices based on an artistic vision (visual metaphors)
- F. Special design problems faced and how you resolved them
- G. Changes that you would make a second time and why
- H. Your greatest successes/personal rewards and why

CA Theatre Arts Standard
3.2 - Advanced
Students design theatre pieces
in specific theatrical styles
including classics by such
playwrights as Shakespeare.

GRAPHICS/PUBLICITY:

A GUIDE TO THE

NOTEBOOK AND CONCEPT PAPER

I. TITLE PAGE

1. School Code
2. A, B, or C Division Festival
3. Title and author of play

II. TEACHER'S SIGNATURE SHEET (see E3–22)

III. CONCEPT PAPER (1–2 pages maximum)

Please write in short, simple sentences.

A. Essential Play Information

1. Title (again)
2. Author (again)
3. Genre (tragedy/comedy, etc.)
4. Historical period/cultural context
5. Settings and time passage
6. Style (romantic, etc.)

B. Interpretation of Play

1. Very brief plot summary — key conflict/resolution
2. Significant roles played by key characters
3. Dominant theme or message
4. Playwright's intent — How play reflects author's purpose

C. Designers' intent — Values of the play/playwright that the designers are committed to expressing through their designs

1. Mood, emotional tone, meanings
2. Stylistic and/or practical design goals

IV. RESEARCH

The following are **recommendations** of things to include in this section. Include as few or as many as are appropriate for each entry.

- A. State specific design choices and explain in more detail how they help to communicate the practical needs, as well as meanings, emotions, and stylistic goals stated in the introduction.
- B. Program cover and flyer (optional T-shirt and tickets) (Explain in more detail how they support the play based on the characters, their actions, the time period, script requirements, and authentic research)
- C. Practical choices — cost, time, materials, ease of use, ease in staging
- D. Artistic choices — color, texture, line, shape, composition, silhouette, balance, terminal accents, special effects
- E. Artistic license — unique choices based on an artistic vision (visual metaphors)
- F. Special design problems faced and how you resolved them
- G. Changes that you would make a second time and why
- H. Your greatest successes/personal rewards and why

CA Theatre Arts Standard
3.2 - Advanced
Students design theatre pieces
in specific theatrical styles
including classics by such
playwrights as Shakespeare.

SETS/LIGHTS VERIFICATION FORM

One copy of this sheet must be filled in and signed for the set/lights design entry. The participant must include it in the mandatory notebook.

SCHOOL CODE: _____

CREATOR'S NAME(S): _____

TOTAL COST OF DESIGN: _____

I verify that the accompanying set/lights design was conceptualized and created by student(s) enrolled in the above school indicated by code. I further verify that this design has never placed in any DTASC competition prior to this date and that it does not exceed the cost of seventy-five dollars (\$75).

Signature of Creator/Designer

Signature of Director/Sponsor

SETS/LIGHTS VERIFICATION FORM

One copy of this sheet must be filled in and signed for the set/lights design entry. The participant must include it in the mandatory notebook.

SCHOOL CODE: _____

CREATOR'S NAME(S): _____

TOTAL COST OF DESIGN: _____

I verify that the accompanying set/lights design was conceptualized and created by student(s) enrolled in the above school indicated by code. I further verify that this design has never placed in any DTASC competition prior to this date and that it does not exceed the cost of seventy-five dollars (\$75).

Signature of Creator/Designer

Signature of Director/Sponsor

COSTUME VERIFICATION FORM

One copy of this sheet must be filled in and signed for EACH costume entry (one entry may be a pair). The participant must include it in the mandatory notebook.

SCHOOL CODE: _____

CREATOR'S NAME: _____

MODEL'S NAME: _____

TOTAL COST: _____

I verify that the accompanying costume was designed and fabricated by student(s) enrolled in the above school indicated by code. I further verify that said costume has never placed in any DTASC competition prior to this date and that it does not exceed the cost of seventy-five dollars (\$75).

Signature of Creator/Designer

Signature of Director/Sponsor

COSTUME VERIFICATION FORM

One copy of this sheet must be filled in and signed for EACH costume entry (one entry may be a pair). The participant must include it in the mandatory notebook.

SCHOOL CODE: _____

CREATOR'S NAME: _____

MODEL'S NAME: _____

TOTAL COST: _____

I verify that the accompanying costume was designed and fabricated by student(s) enrolled in the above school indicated by code. I further verify that said costume has never placed in any DTASC competition prior to this date and that it does not exceed the cost of seventy-five dollars (\$75).

Signature of Creator/Designer

Signature of Director/Sponsor

GRAPHICS/PUBLICITY VERIFICATION FORM

One copy of this sheet must be filled in and signed for the budget/publicity design entry. The participant must include it in the mandatory notebook.

SCHOOL CODE: _____

CREATOR'S NAME(S): _____

TOTAL COST OF DESIGN: _____

I verify that the accompanying budget/publicity design was conceptualized and created by student(s) enrolled in the above school indicated by code. I further verify that this design has never placed in any DTASC competition prior to this date and that it does not exceed the cost of seventy-five dollars (\$75).

Signature of Creator/Designer

Signature of Director/Sponsor

GRAPHICS/PUBLICITY VERIFICATION FORM

One copy of this sheet must be filled in and signed for the budget/publicity design entry. The participant must include it in the mandatory notebook.

SCHOOL CODE: _____

CREATOR'S NAME(S): _____

TOTAL COST OF DESIGN: _____

I verify that the accompanying budget/publicity design was conceptualized and created by student(s) enrolled in the above school indicated by code. I further verify that this design has never placed in any DTASC competition prior to this date and that it does not exceed the cost of seventy-five dollars (\$75).

Signature of Creator/Designer

Signature of Director/Sponsor